

What is OES? What is OES Not?

What is OES?

- Emergency Management Organization
- Emergency Operations Center
- Shared Services Agreement

What do we do?



The Office of emergency services is the day-to-day planning and program administration department for the County's Emergency Management Organization.

We take on things such as:

- Plan construction
- Financial planning grant management
- Training
- Systems maintenance
- Monitoring
- Resource management

The Office of Emergency Services consists of one full-time Yolo County personnel member and contractors who provide technical expertise to the County both pre-event and during an emergency.

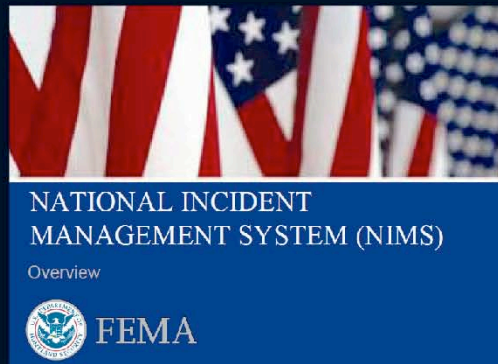
You are currently in the Emergency Operations Center (EOC). This is the central hub where our Emergency Management Organization can collect information and respond to a large disaster and/or emergency.

As far as County government is concerned we reside under the County Administrator's office since the County Administrator is the Emergency Services Director according to Title 4 of the County ordinances.

Here in Yolo we are pretty special since we have something called the Joint Emergency Management Services agreement. This agreement states that the EOC's for each city and the County (OA) EOC work together to respond to emergencies

NIMS

The National Incident Management System



We conform to the National Incident Management System which is a structure within the National Response Framework (all available documents on FEMA's website) for the response to emergencies/disasters. Along with the National Preparedness Goals all three define what needs to be done to prevent, protect against, respond to, and recover from a major event.

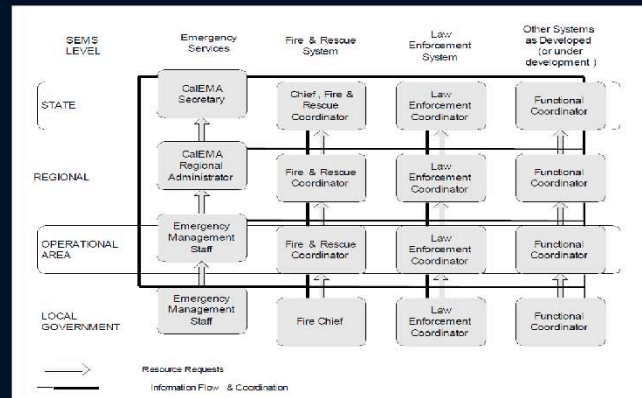
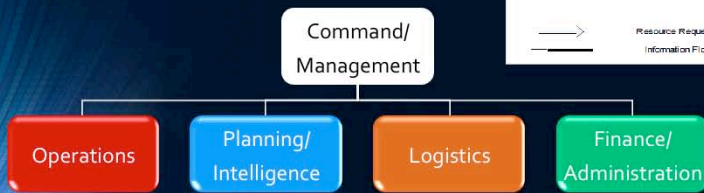
NIMS structure integrates existing best practices into a consistent, nationwide approach to domestic incident management that is applicable at all jurisdictional levels and across functional disciplines. Six major components make up the NIMS system's approach:

- Command and Management
- Preparedness
- Resource Management
- Communications and Information Management
- Supporting Technologies
- Ongoing Management and Maintenance

Following these systems allows for Mutual Aid and common terminology among responders during an event.

SEMS

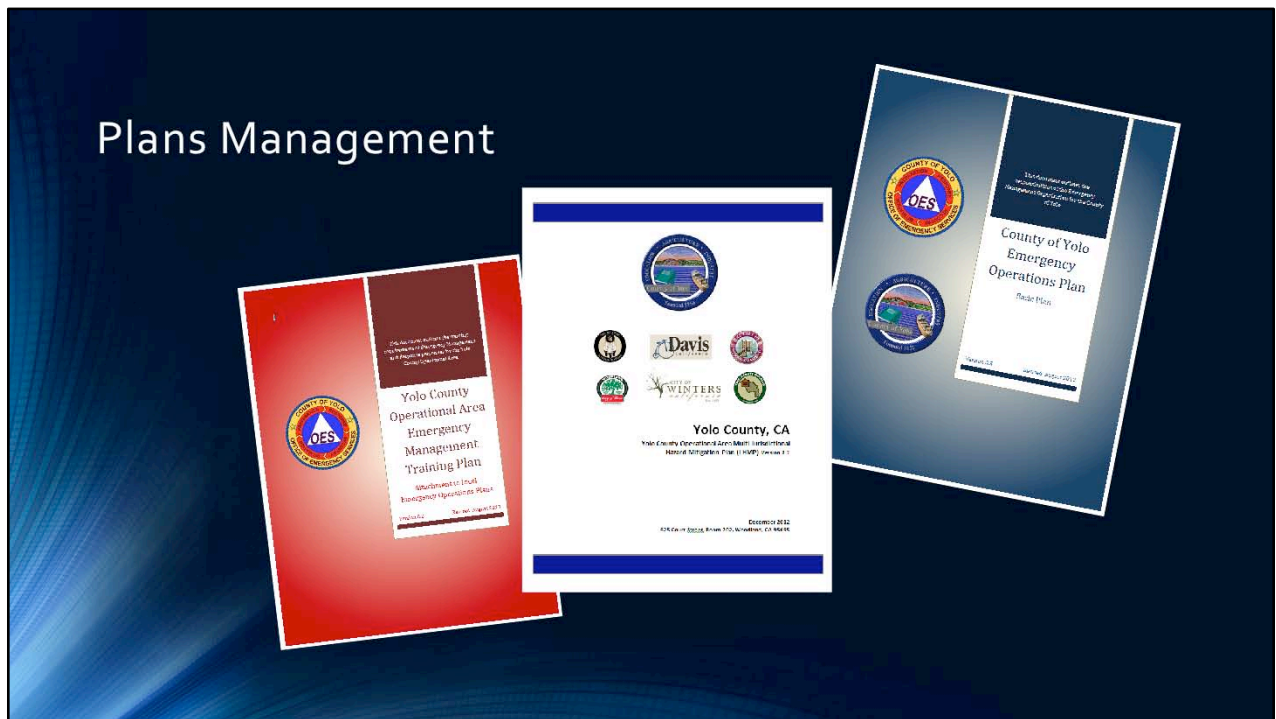
Standardized Emergency Management System



SEMS is the system used in the State of California and incorporates principles within the Incident Command System (ICS) for management along with the overall concept that mutual aid and resource requests flow from a City – County – Operational Area – Region – State – Federal. The primary sections within the EOC that represent the SEMS structures are:

- Command/Management
- Operations
- Logistics
- Planning
- Finance/Administration

Plans Management



We are tasked with the drafting, management, approval, and training for Yolo County Plans. We also assist with the same throughout the Cities whenever possible.

Here is a structure of the Plans within the County that are currently underway



Response

- Resource Management
- Planning
- Financial Management

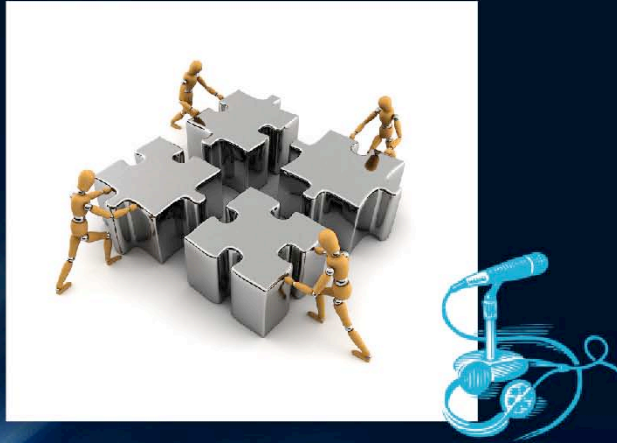


During an event we are tasked with resource management. This means that whenever things, people, or facilities are needed we get the tasked with finding them, mission tasking them, requesting more, and tracking them to recover them.

Our Planning section collects information and verifies it's accuracy to create a common operating picture for everything that is going on during an event. They work with Operations heavily to gather field level information and they are given resource information from Logistics. They put this together in the form of an Emergency Plan for specific operational periods.

Financial Management basically pays for everything. They are also charged with working with Planning to maintain proper processes and records to ensure that the County and Cities can get reimbursed if the event becomes big enough to activate State and Federal reimbursement programs.

How do HAM's fit in?



You are a resource for the responders throughout the County. A very vital communications resource. If additional communications resources are requested the EOC can mission task authorized personnel to fill that need. This requires a check in, reporting your activities during your shift/operational period, and signing out. HAM's can fit in anywhere there is a communications need so examples could be:

- Relaying information between shelter locations
- Assisting County responders to get their information to either the EOC or a DOC
- Filling a gap of communications systems if they all should go down (like at a Hospital or such)

We have a spot here in the EOC for your Net controller to operate from and they would be the person(s) interacting to fill communications requests under the Logistics section of the EOC.